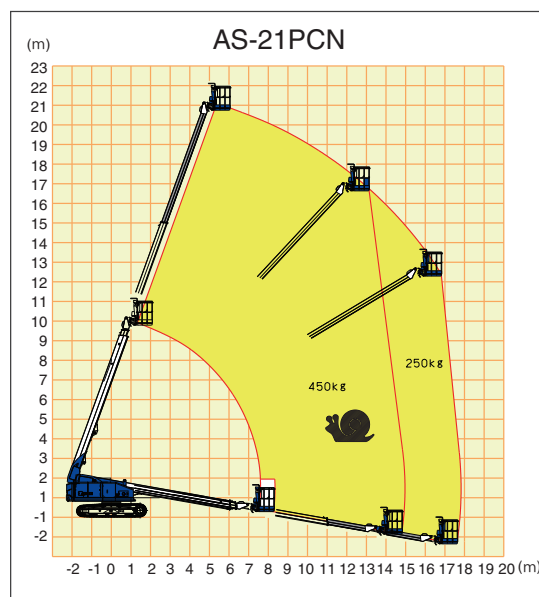


→ AS-21PCN (NUS21N-7)

Crawler type
Telescopic boom lift

Ideal design for large-scale construction sites with 21m fully extended boom, featured for facilitating steel-frame building, etc. The crawlers perform high drivability over rough terrain and soft ground.



TYPE	AS-21PCN
Platform capacity	250 kg / 450 kg
Allowable tilt	5°
Platform dimensions (W x L x H)	1,130 x 730 x 1,000 mm
Platform height (max)	20,870 mm
Horizontal reach	17,805 mm
Machine weight (w/pad)	16,750 (17,170) kg
Overall length	10,650 mm
Overall width	2,480 mm
Overall height	2,190 mm
Engine model	KUBOTA V2607
Travel speeds	1.0/1.4/2.5 km/h

