

→ 15TJC

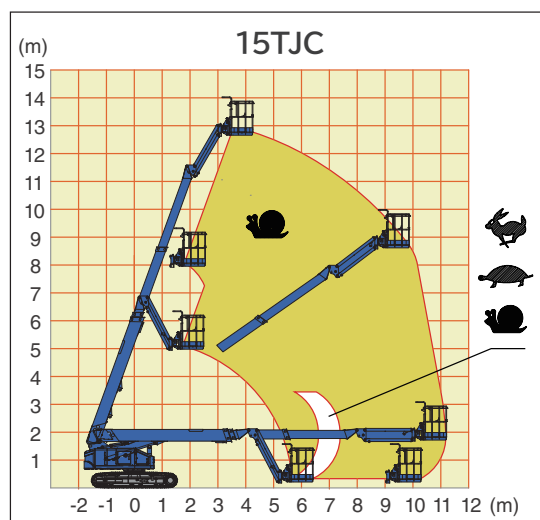
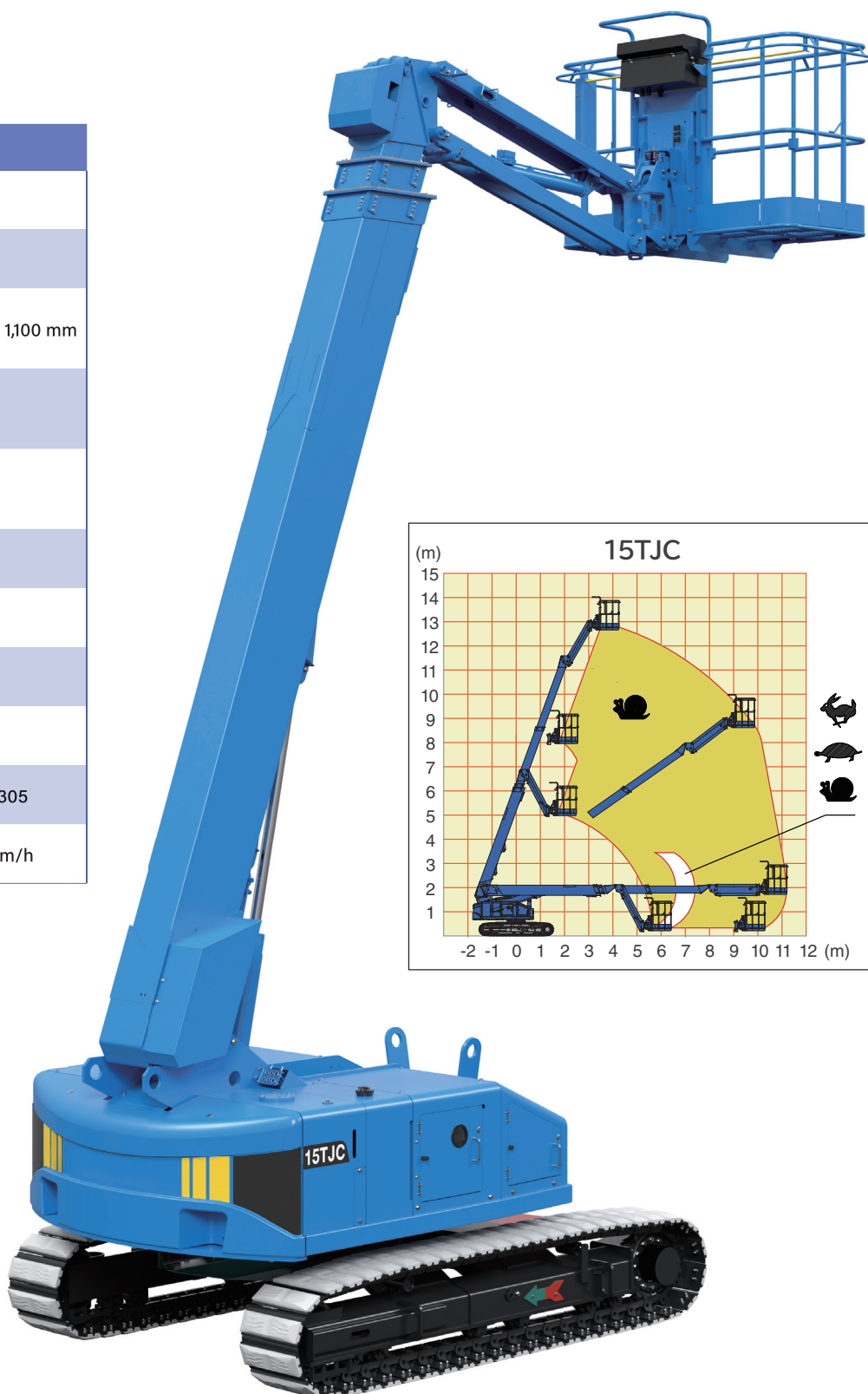
Crawler type
Telescopic boom lift



FEATURES

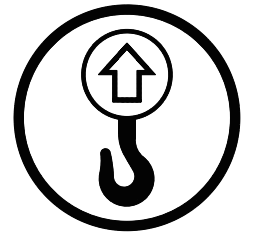
- ✓ Low emission
- ✓ Allowable tilt 5°
- ✓ Total range traveling
- ✓ Overload sensing
- ✓ Wide platform (6ft)
- ✓ Lighting system (option)

MODEL	15TJC
Platform capacity	250 kg
Allowable tilt	5°
Platform dimensions (W x L x H)	1,770 x 730 x 1,100 mm
Platform height (max)	12,778 mm
Horizontal reach (max)	11,182 mm
Machine weight	9,000 kg
Overall length	8,266 mm
Overall width	2,250 mm
Overall height	2,305 mm
Engine model	KUBOTA D1305
Travel speeds	0.9/1.5/2.7 km/h



Lifting the machine

- ⚠ Use only qualified rigging to hoist the machine.
- ⚠ Be sure that lifting devices and crane are sufficient to withstand the machine weight.
- Ensure the boom is in stowed position before lifting.
- Determine the center of gravity of the machine as shown below.
- Attach the rigging to designated lifting rings on the machine.
- Insert protective materials where rigging may interfere with the machine.



Reference dimension
from lifting ring to the hook:
5000 mm

